

**CERTIFIED LAND CORNER RECORDATION**

DESCRIPTION OF CORNER EVIDENCE FOUND, AND ORIGINAL RECORD (If known)

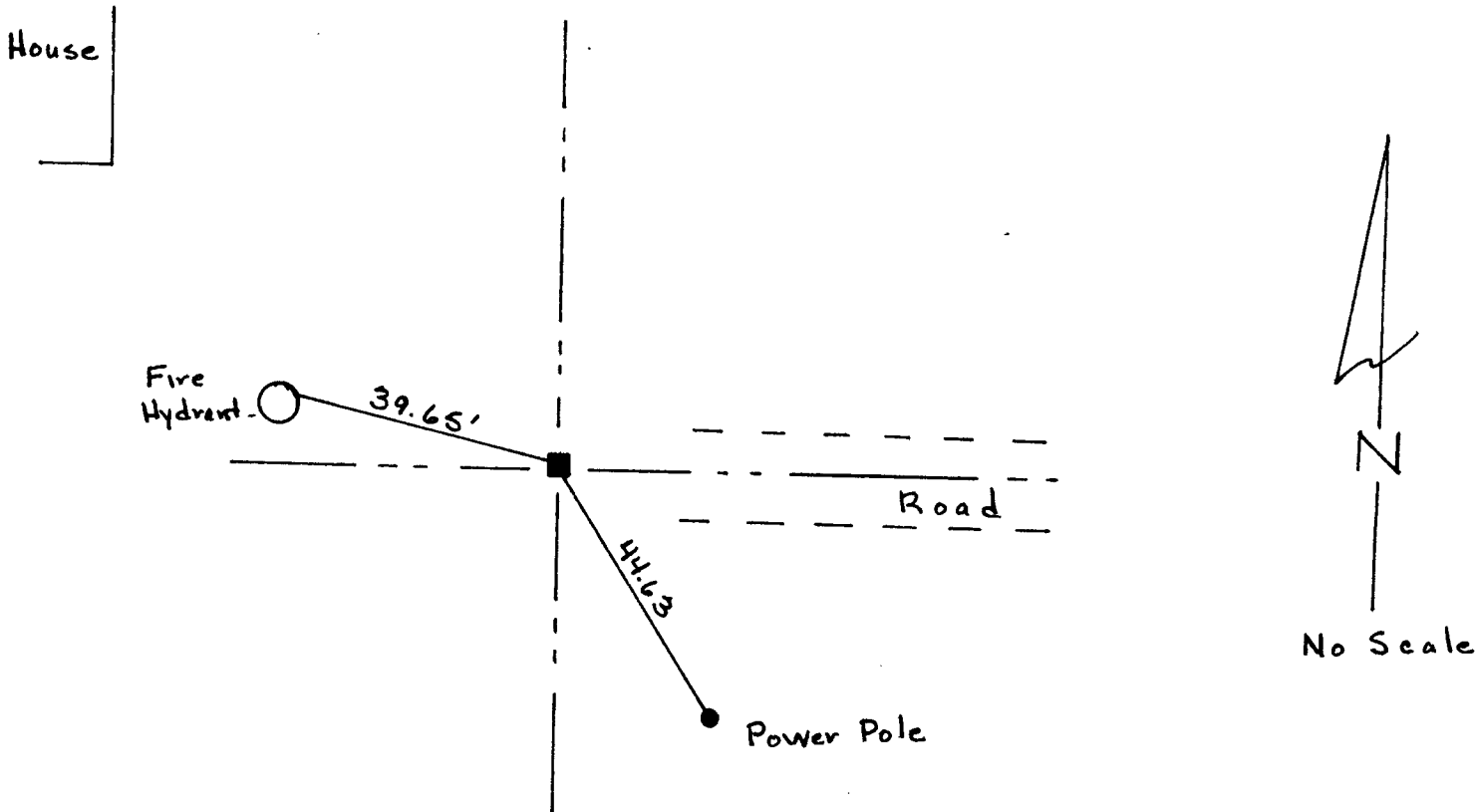
	9	10
T.	16	15
N.	R.	60 W.

Found 1" square iron bar.  
 (Also found #6 rebar, 1.18' north;  
 and #4 rebar, 0.72' south -  
 accepted iron bar.)

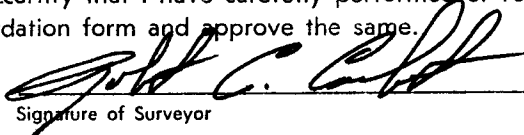
DESCRIPTION OF MONUMENT AND ACCESSORIES ESTABLISHED  
 TO PERPETUATE THE ORIGINAL LOCATION OF THIS CORNER:

Set nail in west face power pole  
 lying southeast of corner - 44.63'.  
 Distance to north coverbolt of  
 fire hydrant lying west of corner is 39.65'

SKETCH, WITH COURSE AND DISTANCE TO ADJACENT CORNER IF DETERMINED IN THIS SURVEY.  
 (May Sketch or Paste Reproduction on Reverse Side.)



I, Robert C. Corbet, L.S. #495 certify that I have carefully performed or reviewed the work done on the diagrammed corner as reported on this recordation form and approve the same.

  
 Signature of Surveyor L.S. 495  
Registration No.

STATE OF WYOMING,  
 Office of Clerk and Recorder,  
 County of Laramie

**778079**

This "corner record" was filed for record on the \_\_\_\_\_ day of FEB 6 1985, 19\_\_\_\_, was noted on the cross-index plat and is assigned page No. \_\_\_\_\_, in book No. \_\_\_\_\_.

  
 County Official

Cross Index No. _____	T. _____	R. _____	Mer. _____
_____	T. _____	R. _____	Mer. _____
_____	T. _____	R. _____	Mer. _____
_____	T. _____	R. _____	Mer. _____
_____	T. _____	R. _____	Mer. _____
_____	T. _____	R. _____	Mer. _____
_____	T. _____	R. _____	Mer. _____

*J-13 T14R60*